



02

DOBRAĐIÇAS
HINGES
CHARNIÈRES

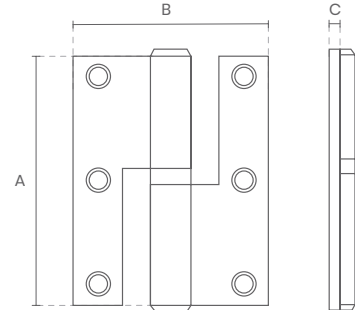




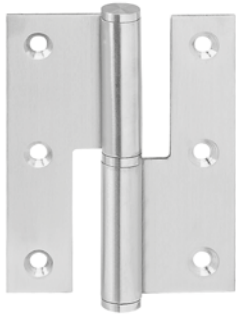
REF \ 73



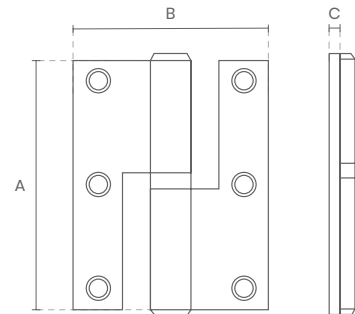
REF.	A x B x C
73 x 3"	75 x 57 x 2
73 x 3" 1/2	90 x 65 x 2,5



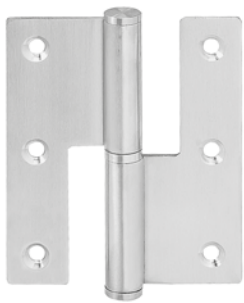
REF \ 1/2 BALANÇO



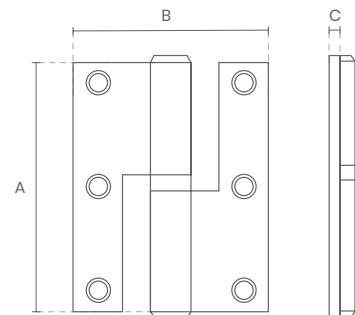
REF.	A x B x C
3"	75 x 60 x 2,5
3" 1/2	90 x 70 x 2,5



REF \ BALANÇO



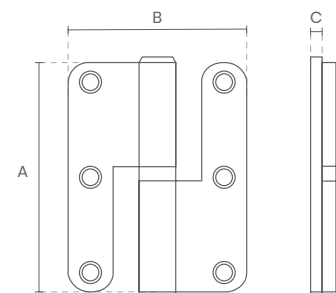
REF.	A x B x C
3" 1/2	90 x 75 x 2,5



REF \ 1/2 BALANÇO CANTOS REDONDOS



REF.	A x B x C
3"	75 x 60 x 2,5
3" 1/2	90 x 70 x 2,5

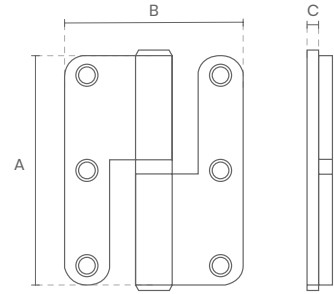


REF **BALANÇO** CANTOS REDONDOS



REF. A x B x C

3" 1/2 90 x 75 x 2,5



REF **415**



REF. A x B x C

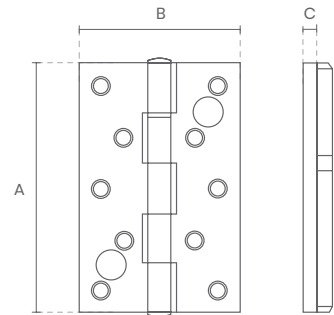
415 125 x 76 x 3

■ ACABAMENTOS FINISHING

Inox
Stainless steel
Acier inoxydable

Latão polido
Polished brass
Laiton poli

Bronze
Bronze
Bronze



REF **2201**



**MEDIDAS
MEASURES
MESURES**

120

180

120
180

■ ACABAMENTOS FINISHING

Alumínio
Aluminum
Aluminium

REF **2202**



**MEDIDAS
MEASURES
MESURES**

120

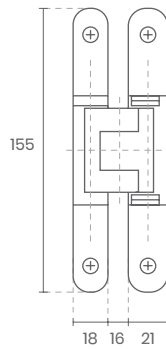
180

120
180

■ ACABAMENTOS FINISHING

Alumínio
Aluminum
Aluminium

REF **TE240**

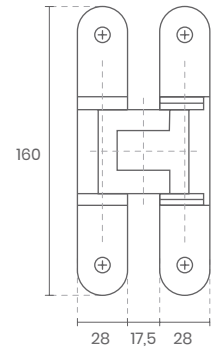


■ CARACTERÍSTICAS GERAIS *GENERAL FEATURES*

Sistema de dobradiça completamente oculto
 Para armações de madeira, aço ou alumínio
 Capacidade de carga: 60Kg
 Ângulo de abertura: 180°



REF **TE340**

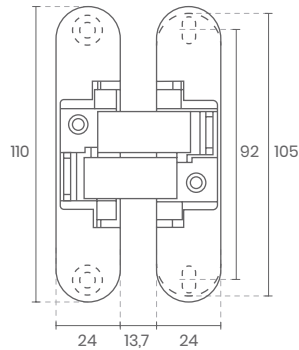
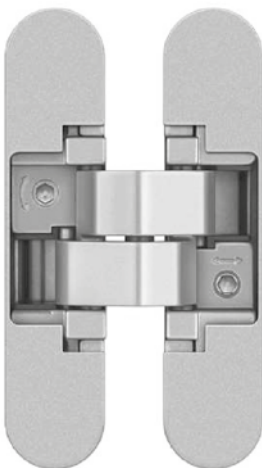


■ CARACTERÍSTICAS GERAIS *GENERAL FEATURES*

Sistema de dobradiça completamente oculto
 Para armações de madeira, aço ou alumínio
 Capacidade de carga: 80Kg
 Ângulo de abertura: 180°



REF **ANI50**

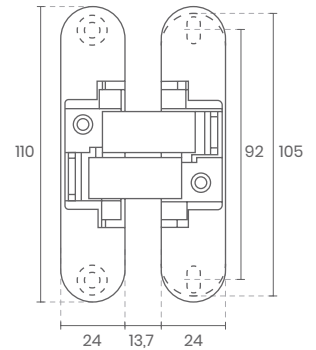
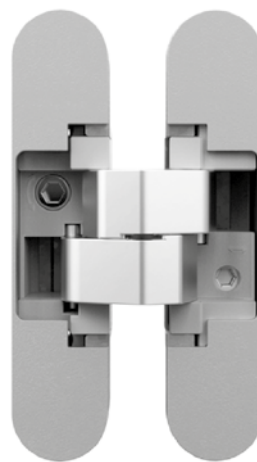


■ CARACTERÍSTICAS GERAIS *GENERAL FEATURES*

Sistema de dobradiça completamente oculto
 Para armações de madeira
 Capacidade de carga: 60Kg
 Ângulo de abertura: 180°



REF **ANI70**



■ CARACTERÍSTICAS GERAIS *GENERAL FEATURES*

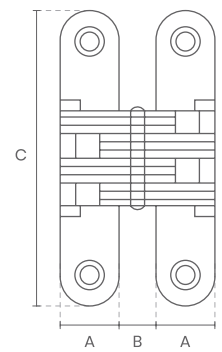
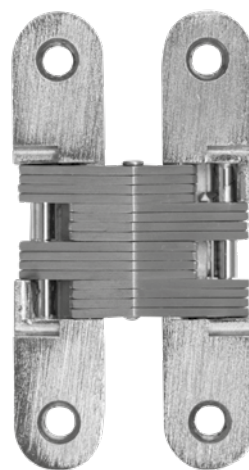
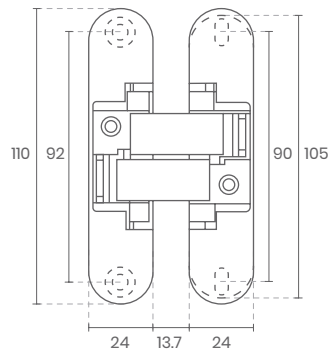
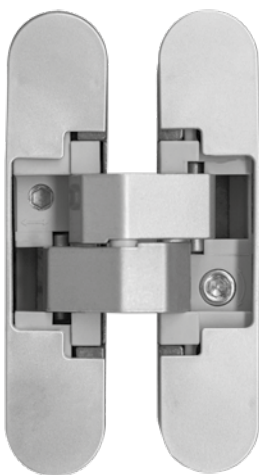
Sistema de dobradiça completamente oculto
 Para armações de madeira
 Capacidade de carga: 40Kg
 Ângulo de abertura: 180°





REF \ **2010**

REF \ **DOBRADIÇA INVISÍVEL**



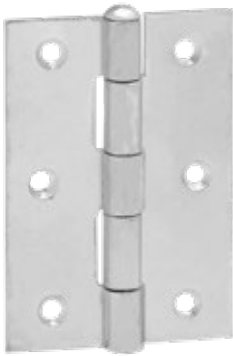
■ **CARACTERÍSTICAS GERAIS** GENERAL FEATURES

Capacidade de carga: 25Kg
 Ângulo de abertura: 180°

A (mm)	B (mm)	C (mm)
12,7	7,5	45
12,7	7,5	60
15,8	12	70
19,5	11,5	95



REF **1838**



MEDIDAS MEASURES MESURES
 1" 1/2 / 2" / 2" 1/2 / 3" / 3" 1/2 / 4"

REF **85**



MEDIDAS MEASURES MESURES
 x2 / 2" / 2" 1/2 / 3" / 3" 1/2 / 4"

■ ACABAMENTOS FINISHING

-  **Inox**
Stainless steel
Acier inoxydable
-  **Lacado Bronze**
Bronze lacquer
Laquée bronze
-  **F. Bronze**
F. Bronze
F. Bronze
-  **Zinco**
Zinc
Zinc

REF \ 403



MEDIDAS MEASURES MESURES
2" 1/2 / 3" / 3" 1/2 / 4"

REF \ 400



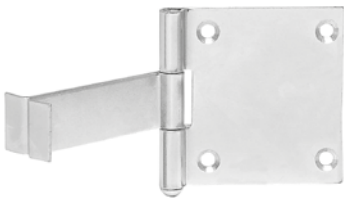
MEDIDAS MEASURES MESURES
2" 1/2 / 3" / 3" 1/2

REF \ 17



MEDIDAS MEASURES MESURES
2" / 2" 1/2 / 3" 1/2

REF \ 57



MEDIDAS MEASURES MESURES
1" 1/2 / 2" / 2" 1/2 / 3" / 3" 1/2

REF \ 59



MEDIDAS MEASURES MESURES
2" / 2" 1/2 / 3"

REF \ 61



MEDIDAS MEASURES MESURES
2" 1/4 / 2" 1/2 / 2" 3/4 / 3" / 3" 1/2

REF \ 816



MEDIDAS MEASURES MESURES
1" / 1" 1/4 / 1" 1/2 / 2" / 2" 1/4 / 2" 1/2 / 3"

REF \ PIANO



■ ACABAMENTOS FINISHING

Latão Polido
Polished brass
Laiton poli

Inox
Stainless steel
Acier inoxydable